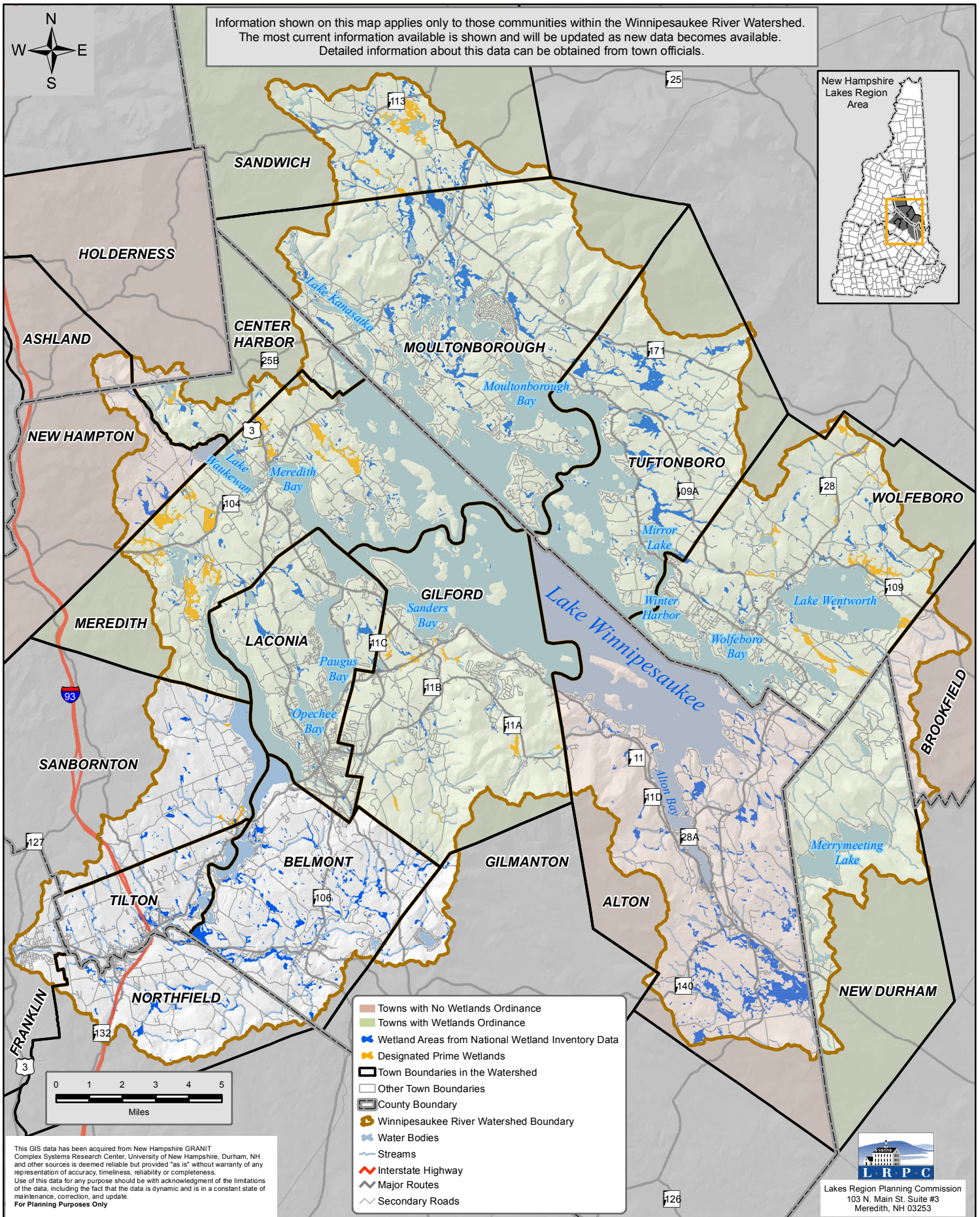
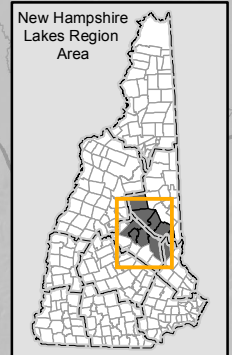


# Winnepesaukee River Watershed

## Wetland Ordinances



Information shown on this map applies only to those communities within the Winnepesaukee River Watershed. The most current information available is shown and will be updated as new data becomes available. Detailed information about this data can be obtained from town officials.



- Towns with No Wetlands Ordinance
- Towns with Wetlands Ordinance
- Wetland Areas from National Wetland Inventory Data
- Designated Prime Wetlands
- Town Boundaries in the Watershed
- Other Town Boundaries
- County Boundary
- Winnepesaukee River Watershed Boundary
- Water Bodies
- Streams
- Interstate Highway
- Major Routes
- Secondary Roads

This GIS data has been acquired from New Hampshire GRANIT Complex Systems Research Center, University of New Hampshire, Durham, NH and other sources is deemed reliable but provided "as is" without warranty of any representation of accuracy, timeliness, reliability or completeness. Use of this data for any purpose should be with acknowledgment of the limitations of the data, including the fact that the data is dynamic and is in a constant state of maintenance, correction, and update. For Planning Purposes Only



Lakes Region Planning Commission  
103 N. Main St. Suite #3  
Meredith, NH 03253